

MEDLINE® & CARELINE® **Product Overview**



MEDLINE & CARELINE – From high quality actuators to complete system solutions

LINAK MEDLINE® & CARELINE® helps improve the comfort of both patients and caregivers in hospitals, nursing homes, various treatment centres and private homes. Our products and system solutions are developed in close collaboration with our customers in order to achieve truly innovative solutions based on and around electric linear actuator systems.

The actuator system is an important part of your solution and you can expect quality in every detail. MEDLINE & CARELINE products are approved for applications within hospital and health care equipment.

LINAK – we focus on innovation, perfect movement and absolute control.

Actuators



LA12

- Compact design
- Robust
- Thrust: 750 N
- Speed: 40 mm/s



LA22

- Small dimensions
- Linear design
- Thrust: 400 N (300 N in 12V)
- Speed: 37 mm/s



LA23

- Compact design
- Strong
- Thrust: 2500 N
- Speed: 9,4 mm/s



LA27

- Powerful
- Thrust: 6,000 N in push application
- Thrust: 4,000 N in pull application
- Speed: 13 mm/s



LA27C

- Powerful
- Exchangeable cables
- Thrust: 6,000 N in push & 4,000 N in pull
- Speed: 13 mm/s



LA28

- Quiet
- Powerful
- Thrust: 3,500 N
- Speed: 46 mm/s



LA28 Compact

- Quiet
- Powerful
- Thrust: 3,500 N
- Speed: 46 mm/s



LA30

- Powerful
- Compact design
- Thrust: 6,000 N
- Speed: 65 mm/s



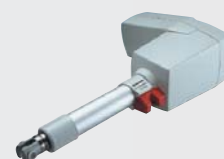
LA31 CARELINE®

- Quiet
- Powerful
- Thrust: 6,000 N in push & 4,000 N in pull
- Speed: 32 mm/s



LA32

- Powerful
- Outstanding performance with many special options
- Thrust: 6,000 N
- Speed: 15 mm/s



LA34

- Compact design
- Outstanding performance
- Thrust: 10,000 N in push & 6,000 N in pull
- Speed: 18 mm/s



LA34 Composite

- Thrust 10,000 N in push & 4,000 N in pull
- Wide range of safety options
- Speed 18 mm/s



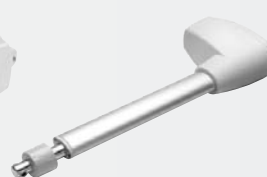
LA43

- Powerful
- Wide range of safety options
- Thrust: 8,000 N (push only)



LA43 IC

- Compact design
- Low noise
- Thrust: 8,000 N (push only)
- High speed at full load



LA44

- Powerful
- Wide range of safety options
- Thrust: 12,000 N (push only)
- Speed: 14 mm/s



LA44 IC

- High speed
- Low noise
- Low energy consumption
- High lifting force up to 12.000 N

Control boxes



CB6

- LED power on indicator
- Detachable mains cable and strain relief for all cables
- Voltage in: 220-240/120/100 V



CB6S

- Compatible and flexible
- Mini-fit plug and std. endstop switch/signal switch are all supported



CB8A

- Voltage in: 24 V AC (use charger)
- Duty cycle: 10 %
- Simple design



CB9C

- Voltage in: 230/120/100 V AC
- Duty Cycle: 10 %
- Can be fully integrated



CB9CB

- Voltage in: 230/120/100 V AC
- Duty Cycle: 10 %
- Can be fully integrated



CB12

- Voltage in: 230/120/100 V AC
- Duty cycle: 10 %
- Controls up to 4 actuators



CB14

- Voltage in: 230/120/100 V AC
- Duty cycle: 10 %
- Controls up to 5 actuators



CB16

- Voltage in: 230/120/100 V AC
- Duty cycle: 10 %
- Compatible and flexible



CB20

- Voltage in: 230/120/100 V AC
- Duty cycle: 10 %
- Unique safety concept



CBJ Care

- High end JUMBO box for patient lifters
- Voltage output: 24 V DC
- Duty Cycle: 10 %



CBJ Home

- Specially developed for patient lifts
- Voltage in: 230/120/100 V AC
- Duty cycle: 10 %



COB020

- For use with the JUMBO battery pack and CU20
- Makes increased battery power available

Control boxes with SMPS



CB6 OBMe with SMPS

- Constant speed independent of load
- Compact lightweight solution

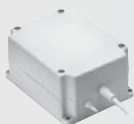


CB6P2 with SMPS

- Universal input voltage
- Low stand-by power consumption

Switch Mode Power Supply - The new green
SMPS technology in control boxes is an environmental leap forward that will add comfort and safety to healthcare applications and at the same time reduce weight and increase efficiency

Accessories



BA18

- Rated Capacity: 1.2 Ah 24V
- Max. Charging Current: 0.3A



CHJ2

- Specially designed for use as a wall-charger for the JUMBO system



CH01

- Gives the possibility to interchange the plug type with a simple "slide on" operation



Safety Limit Switch

- Can be mounted in connection with the 24V DC actuators and a control box on e.g. a bed frame

Columns



BL1 small and medium

- Thrust: 2,000 N
- Speed: 18 mm/s



BL1

- Thrust: 2,000 N
- Speed: 18 mm/s



LC2

- Thrust: 5,000 N
- Speed: 18 mm/s



LP2

- Thrust: 6,300 N
- Speed: 21 mm/s



LP3

- Thrust: 2,400 N
- Speed: 18 mm/s

Accessories



DJB

- For connection of up to 4 controls
- IPX6



MJB Gateway

- Designed for use together with OpenBus™ control boxes
- Possible to connect multiple handsets, attendant controls or 3rd party products



MJB SMPS

- Designed for use together with OpenBus™ control boxes
- When there is a need for a power supply near the bed



MJB under bed light (INT)

- Designed for use together with OpenBus™ control boxes
- LED integrated in the MJB housing



MJB under bed light (Ext)

- Designed for use together with OpenBus™ control boxes
- The external LED cable makes it more flexible to use the UBL



Scale

- Developed for the OpenBus™ product range



SMPS30

- Switch mode power supply with universal input voltage (100-240V)
- Exchangeable cables
- High safety and flexibility

Service Data Tool



- Service Data Tool and CBJ Care ensures efficient maintenance procedures



- Service Data Tool and LA43 IC/LA44 IC ensures efficient maintenance procedures



- Service Data Tool and CB6 OBMe ensures efficient maintenance procedures

Controls



ACC

- Compact
- Lock-out function
- Compatible with control boxes that use an OpenBus™ interface



ACK OpenBus

- The OPENBUS™ system makes it possible to use key-pads as Attendant Controls or Handsets integrated in the bed side rails



ACM

- Low-cost alternative to the existing ACP
- Compact design and simple operation



ACO

- Cost optimised and compact
- Lock-out function visible with yellow LED's
- Compatible with control boxes that use an OpenBus interface



DPH

- Small,
- Compact
- Userfriendly



FS

- A left pedal unit
- A right pedal unit
- Two different electronic boxes



FS2

- Especially designed for mounting on a support plate
- The Foot Switch is available in a single and a double version



FS3

- The foot switch is available as a floor model or bed model
- Intuitive - easy to use
- Expandable modules



FPP

- User-friendly
- Easy to install
- Compatible with control boxes that use an OpenBus™ interface



HB20

- Combines ergonomic design with a wide range of functionalities



HB30

- User friendly
- Ergonomic design
- Exchangeable cables



HB40

- Sturdy and compact
- Ergonomically designed

For further information about the MEDLINE and CARELINE product programme:
www.linak.com/medline-careline



HB70

- Combines ergonomic design and functionality
- Protection class IPX6 as standard



HB80

- Ergonomic design shaped for the hand
- High water resistance with optional IP degree of IPX7 or IPX6 washable



HD80

- Front cover especially designed for patient lifters and JUMBO Care
- Ergonomic design and "dome" buttons



HL70

- Integrated locking function



HL80

- Ergonomic design and switch activations
- Lockable handset

The intelligent application is born

OpenBus™ offers the future platform for innovative functions with a high degree of flexibility.

The OpenBus features solve real life problems and the concept is in fact open to a multitude of life improving features. The technology offers system compatibility and serves as a platform for the future with logging of service data and the possibility of connecting a variety of accessories to one single control box.

Optimising the solution

Depending on the situation and the need, the control box is configured to fit the application. There is already a long list of solutions available; solutions that in various ways improve hygiene, economy, work environment and not least ease everyday life of users and patients. And there are a lot of functions in the pipeline as well as many possibilities just waiting to be identified.

What is OpenBus?

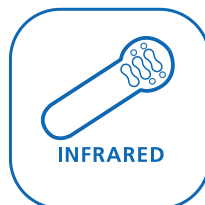
In addition to controlling LINAK actuators and columns, our control systems are now developed in an open digital communication platform enabling our customers to offer future-proof solution to the sectors. This is what we call OpenBus™.



- Connect to nurse call
- Send data from i.e a bed
- Make the application intelligent



- Improved safety
- Lock functions



- Avoid cables
- Improved independence



Control Box

Enables customised solutions.



- Better service
- Charge USB devices
- Easy access to power

- Improved services routines
- Reduce downtime
- Saves time



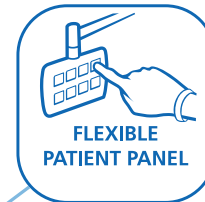
- Less manual checks
- Improved safety



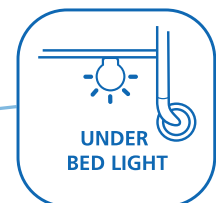
- Improved cleaning routines
- Less manual checks
- Improved hygiene



- Improved comfort
- Independence
- Saves time



- Saves time
- Calling staff
- Specify service call (E.g. "ask for a glass of water-button")



- Comfort
- Improved safety
- Avoid falling accidents



- Assisting nurses
- Improved safety
- Improved comfort

IMAGINE

**And then there are all the needs and possibilities yet to be identified.
Just imagine ...**



- Reliable Service
- Faster service
- Saving data



- Saves time
- Less manual work
- Improved comfort



LINAK has a well-developed sales and service organisation in Europe, Americas, Asia and Australia. Therefore, we can assist you and your customers locally, under the global sales concept idea:
Be global, act local



We add value to your products by offering innovative solutions, extensive knowledge, world-class production and global presence.



LINAK has a world-class global sales and service organisation. Today we are present in 35 countries all over the world. *For further information about the MEDLINE and CARELINE product programme:*
www.linak.com/medline-careline

Terms of use

The user is responsible for determining the suitability of LINAK products for a specific application. LINAK takes great care in providing accurate and up-to-date information on its products. However, due to continuous development in order to improve its products, LINAK products are subject to frequent modifications and changes without prior notice. Therefore, LINAK cannot guarantee the correct and actual status of said information on its products. While LINAK uses its best efforts to fulfil orders, LINAK cannot, for the same reasons as mentioned above, guarantee the availability of any particular product. Therefore, LINAK reserves the right to discontinue the sale of any product displayed on its website or listed in its catalogues or other written material drawn up by LINAK.

All sales are subject to the Standard Terms of Sale and Delivery for LINAK. For a copy hereof, please contact LINAK.

LINAK® 
WE IMPROVE YOUR LIFE